

Heut' triumphiret Gottes Sohn

J.S. Bach
arr. Gijs Bikker

♩ = 120
prelude

B♭ Trumpet 1
mf

B♭ Trumpet 2
mf

Horn in F
mf

Trombone
mf

Tuba
mf

5

♩ = 108
vers

10

f

mf

mf

mf

16



Musical score system 16-20. It consists of five staves: three treble clefs and two bass clefs. The key signature has two sharps (F# and C#). The music features a mix of quarter, eighth, and half notes, with some rests and dynamic markings.

21



Musical score system 21-24. It consists of five staves: three treble clefs and two bass clefs. The key signature has two sharps (F# and C#). The music continues with various note values and rests.

25



Musical score system 25-29. It consists of five staves: three treble clefs and two bass clefs. The key signature has two sharps (F# and C#). The music concludes with various note values and rests.

♩ = 120
postlude

3

30

36

B♭ Trumpet 1 Heut' triumphiret Gottes Sohn

J.S. Bach
arr. Gijs Bikker

♩ = 120
prelude

mf

11 ♩ = 108
vers

f

22

f

33 ♩ = 120
postlude

f

B♭ Trumpet 2 Heut' triumphiret Gottes Sohn

J.S. Bach
arr. Gijs Bikker

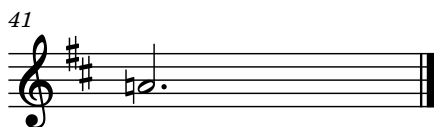
♩ = 120
prelude



10 ♩ = 108
vers



31 ♩ = 120
postlude



Horn in F

Heut' triumphiret Gottes Sohn

J.S. Bach
arr. Gijs Bikker

$\text{♩} = 120$
prelude

mf

11 $\text{♩} = 108$
vers

mf

22

34 $\text{♩} = 120$
postlude

mf

Trombone

Heut' triumphiret Gottes Sohn

J.S. Bach
arr. Gijs Bikker

♩ = 120
prelude

Musical notation for the prelude section, starting at measure 1. The key signature has one sharp (F#), and the time signature is 3/4. The notation is written on a bass clef staff. The dynamics are marked *mf*. The piece concludes with a double bar line.

11
♩ = 108
vers
2
mf

Musical notation for the first verse section, starting at measure 11. The key signature has one sharp (F#), and the time signature is 2/4. The notation is written on a bass clef staff. The dynamics are marked *mf*. The piece concludes with a double bar line.

Musical notation for the second verse section, starting at measure 23. The key signature has one sharp (F#), and the time signature is 2/4. The notation is written on a bass clef staff. The piece concludes with a double bar line.

33
♩ = 120
postlude

Musical notation for the postlude section, starting at measure 33. The key signature has one sharp (F#), and the time signature is 3/4. The notation is written on a bass clef staff. The dynamics are marked *mf*. The piece concludes with a double bar line.

Tuba

Heut' triumphiret Gottes Sohn

J.S. Bach
arr. Gijs Bikker

♩ = 120
prelude



11 ♩ = 108
vers



33 ♩ = 120
postlude

