

Liedboek 2013 - 215

Ontwaak, o mens, de dag breekt aan / Melcombe

Samuel Webbe

♩ = 112
prelude

Bb Trumpet 1
f

Bb Trumpet 2
f

Trombone
f

Tuba
f

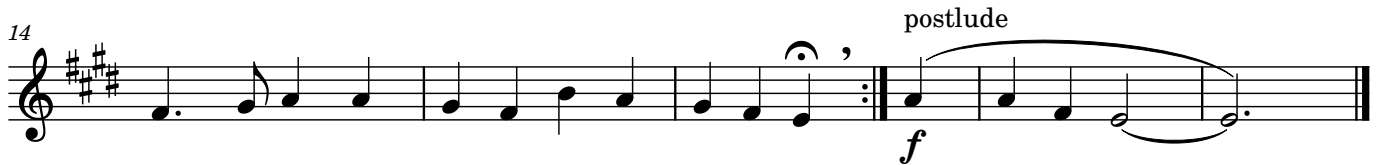
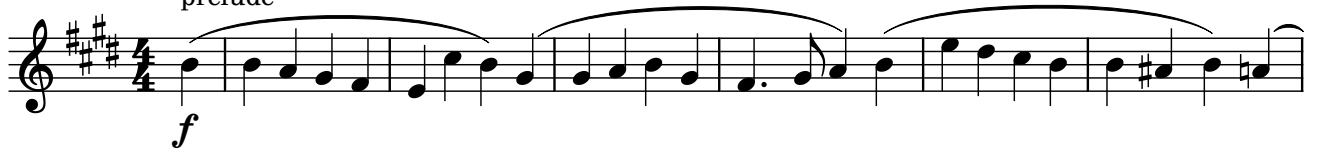
6
verse
mf
mf
mf
mf

13
postlude
f
f
f
f

Ontwaak, o mens, de dag breekt aan / Melcombe

Samuel Webbe

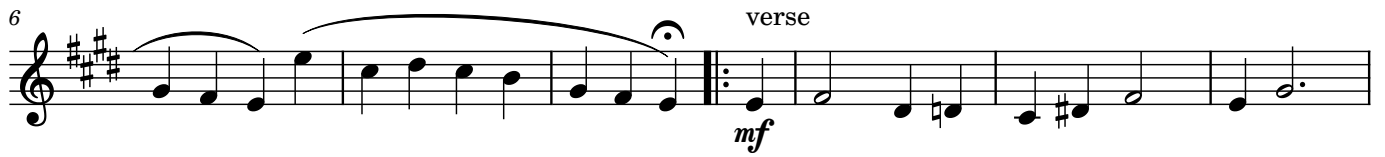
$\text{♩} = 112$
prelude



Ontwaak, o mens, de dag breekt aan / Melcombe

Samuel Webbe

$\text{♩} = 112$
prelude



Trombone

Liedboek 2013 - 215

Ontwaak, o mens, de dag breekt aan / Melcombe

Samuel Webbe

♩ = 112
prelude

The prelude section is written in bass clef with a key signature of one sharp (F#) and a 4/4 time signature. It begins with a dynamic marking of *f*. The melody consists of quarter and eighth notes, with several measures featuring slurs over groups of notes. The piece concludes with a fermata over the final note.

verse
9

The verse section is marked with a repeat sign and a dynamic of *mf*. It contains nine measures of music, primarily using quarter notes. The postlude section follows, marked with a dynamic of *f*, and consists of four measures of music, including a final measure with a fermata.

Tuba

Liedboek 2013 - 215

Ontwaak, o mens, de dag breekt aan / Melcombe

Samuel Webbe

♩ = 112
prelude

Musical notation for the prelude and verse. The prelude is marked *f* and the verse is marked *mf*. The tempo is 112 beats per minute. The key signature is one sharp (F#) and the time signature is 4/4. The prelude consists of a series of eighth and quarter notes, while the verse is a simple melody of quarter notes.

10

Musical notation for the postlude, marked *f*. The key signature is one sharp (F#) and the time signature is 4/4. The postlude consists of a series of quarter and eighth notes, ending with a double bar line.