

BWV 2.6 Ach Gott, vom Himmel sieh' darein

J.S.Bach / Gijs Bikker

$\text{♩} = 92$

Trumpet 1
Trumpet 2
Horn in F
Trombone
Tuba

This system contains the first five measures of the piece. Trumpet 1 begins with a melodic line in the first measure, while Trumpet 2, Horn in F, Trombone, and Tuba are silent. In the second measure, Trumpet 2 enters with a rhythmic pattern. The Horn in F and Tuba enter in the fourth measure with their respective parts. The Trombone remains silent throughout this system.

5

Trumpet 1
Trumpet 2
Horn in F
Trombone
Tuba

This system contains measures 6 through 10. All instruments are active. Trumpet 1 has a rest in measure 6 and then plays a melodic line. Trumpet 2 continues its rhythmic pattern. The Horn in F and Tuba play their parts, with the Tuba having a rest in measure 10. The Trombone plays a rhythmic accompaniment throughout.

9

Trumpet 1
Trumpet 2
Horn in F
Trombone
Tuba

mf
mp
mp
mp
mp

Detailed description: This system contains measures 9 through 12. It features five staves: Trumpet 1 (treble clef), Trumpet 2 (treble clef), Horn in F (treble clef), Trombone (bass clef), and Tuba (bass clef). The key signature has two flats (B-flat and E-flat). Measure 9 starts with a 9-measure rest for all instruments. In measure 10, Trumpet 1 plays a sixteenth-note pattern, while other instruments play quarter notes. Measure 11 continues with similar patterns. Measure 12 ends with a 4-measure rest for all instruments. Dynamics are indicated as *mf* for Trumpet 1 and *mp* for the other instruments.

13

Trumpet 1
Trumpet 2
Horn in F
Trombone
Tuba

Detailed description: This system contains measures 13 through 16. It features five staves: Trumpet 1 (treble clef), Trumpet 2 (treble clef), Horn in F (treble clef), Trombone (bass clef), and Tuba (bass clef). The key signature has two flats. Measure 13 starts with a 4-measure rest for all instruments. In measure 14, all instruments play quarter notes. Measure 15 continues with similar patterns. Measure 16 ends with a 4-measure rest for all instruments.

18

Trumpet 1
Trumpet 2
Horn in F
Trombone
Tuba

Detailed description: This system contains measures 18 through 21. It features five staves: Trumpet 1 (treble clef), Trumpet 2 (treble clef), Horn in F (treble clef), Trombone (bass clef), and Tuba (bass clef). The key signature has two flats. Measure 18 starts with a 4-measure rest for all instruments. In measure 19, all instruments play quarter notes. Measure 20 continues with similar patterns. Measure 21 ends with a 4-measure rest for all instruments.

B♭ Trumpet (Bb) 1

BWV 2.6 Ach Gott, vom Himmel sieh' darein

J.S.Bach / Gijs Bikker

1. Ach Gott, vom Himmel sieh' darein

♩ = 92



22

Trumpet 1
Trumpet 2
Horn in F
Trombone
Tuba

Detailed description: This system contains measures 22 through 25. It features five staves: Trumpet 1 (treble clef), Trumpet 2 (treble clef), Horn in F (treble clef), Trombone (bass clef), and Tuba (bass clef). The key signature has one flat (B-flat). Measure 22 shows a rest for all instruments. In measure 23, the trumpets and horns play quarter notes, while the trombone and tuba play half notes. Measure 24 continues with similar rhythmic patterns. Measure 25 concludes with a final chord across all parts.

26

Trumpet 1
Trumpet 2
Horn in F
Trombone
Tuba

Detailed description: This system contains measures 26 through 28. The instrumentation remains the same. Measure 26 features a melodic line in the trumpets and horns, with the trombone and tuba providing harmonic support. Measure 27 shows a continuation of the melodic theme. Measure 28 ends with a sustained chord in all parts.

29

Trumpet 1
Trumpet 2
Horn in F
Trombone
Tuba

Detailed description: This system contains measures 29 through 32. Measure 29 introduces a new melodic motif for the trumpets and horns. Measure 30 continues this motif. Measure 31 features a more active rhythmic pattern. Measure 32 concludes the system with a final, sustained chord.

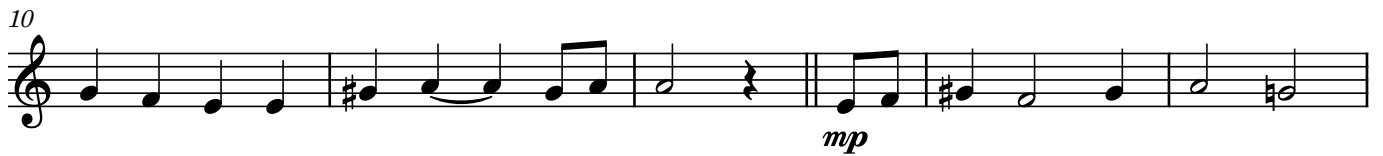
Trumpet (Bb) 2

BWV 2.6 Ach Gott, vom Himmel sieh' darein

J.S.Bach / Gijs Bikker

1. Ach Gott, vom Himmel sieh' darein

♩ = 92



Horn (F)

BWV 2.6 Ach Gott, vom Himmel sieh' darein

J.S.Bach / Gijs Bikker

1. Ach Gott, vom Himmel sieh' darein

$\text{♩} = 92$

1

5

10 *mp*

15

20

25

29

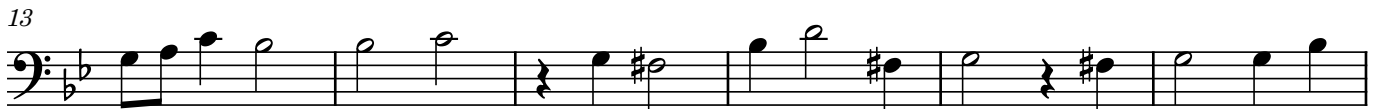
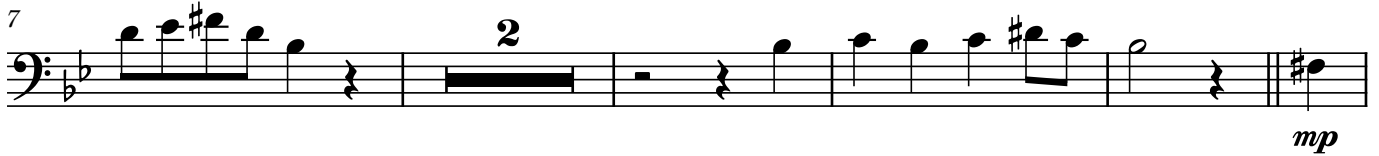
Trombone

BWV 2.6 Ach Gott, vom Himmel sieh' darein

J.S.Bach / Gijs Bikker

1. Ach Gott, vom Himmel sieh' darein

♩ = 92



Tuba

BWV 2.6 Ach Gott, vom Himmel sieh' darein

J.S.Bach / Gijs Bikker

1. Ach Gott, vom Himmel sieh' darein

♩ = 92

2



6



11



16



21



25



29

