

Autumn

Thomas Hood (1799-1845)

Gijs Bikker

Andante $\text{♩} = 80$
mf

Soprano
The au - tumn is old; The sere leaves are fly - ing; He hath

Alto
The au - tumn is old; The sere leaves are fly - ing; He hath

Tenor
The au - tumn is old; The sere leaves are fly - ing; He hath

Bass
The au - tumn is old; The sere leaves are fly - ing; He hath

Piano
mf

5

S.
ga - the - red up gold And now he is dy - ing: Old age, be - gin sigh - ing!

A.
ga - the - red up gold And now he is dy - ing: Old age, be - gin sigh - ing!

T.
ga - the - red up gold And now he is dy - ing: Old age, be - gin sigh - ing!

B.
ga - the - red up gold And now he is dy - ing: Old age, be - gin sigh - ing!

Pno.
mf

12 *mf*

S. The vin - tage is ripe; The har - vest is hea - ping; But some that

A. *mf*
The vin - tage is_ ripe; The har - vest is hea - ping; But some that

T. *mf*
The vin - tage is ripe; The har - vest is hea - ping; But some that

B. *mf*
The vin - tage is ripe; The har - vest is_ hea - ping; But some that

Pno. *mf*

18 *f* *mf*

S. have sowed Have no ri - ches for rea - ping Poor wretch, fall a - wee - ping!

A. *f* *mf*
have sowed Have no ri - ches for rea - ping Poor wretch, fall a - wee - ping!

T. *f* *mf*
have sowed Have no ri - ches for_ rea - ping Poor wretch, fall a - wee - ping!

B. *f* *mf*
have sowed Have no ri - ches for rea - ping Poor wretch, fall a - wee - ping!

Pno. *f* *mf*

24 *mf*

S. The year's in the wane; There is no - thing a - dor - ning; The

A. *mf* The year's in the wane; There is no - thing a - dor - ning The

T. *mf* The year's in the wane; There is no - thing a - dor - ning; The

B. *mf* The year's in the wane; There is no - thing a dor - ning; The

Pno. *mf*

29

S. night has no eve, And the day has no mor - ning Cold win - ter gives war ____

A. night has no eve, And the day has no mor - ning Cold win - ter gives war ____

T. night has no eve, And the day has no mor - ning Cold win - ter gives war ____

B. night has no eve, And the day has no mor - ning Cold win - ter gives war ____

Pno.

35 *mf*

S. ning. The ri - vers run chill The red sun is sin - king; And I am

A. ning. The ri - vers run chill The red sun is sin - king; And I am

T. ning. The ri - vers run chill The red sun is sin - king; And I am

B. ning. The ri - vers run chill The red sun is sin - king; And I am

Pno. *mf*

42 *f* *mf*

S. grown old And life is fast shrin - king; Here's e - now for sad thin - king!

A. grown old And life is fast shrin - king; Here's e - now for sad thin - king!

T. grown old And life is fast shrin - king; Here's e - now for sad thin - king!

B. grown old And life is fast schrin - king; Here's e - now for sad thin - king!

Pno. *f* *mf*

Soprano

Autumn

Thomas Hood (1799-1845)

Gijs Bikker

Andante $\text{♩} = 80$

mf



The_ au - tumn is old; The sear leaves are fly - ing; He hath



ga - the - red up gold And now he is dy - ing: Old age, be - gin sigh - ing!



The vin - tage is ripe; The har - vest is hea - ping; But some that



have sowed Have no ri - ches for rea - ping Poor wretch, fall a - wee - ping!



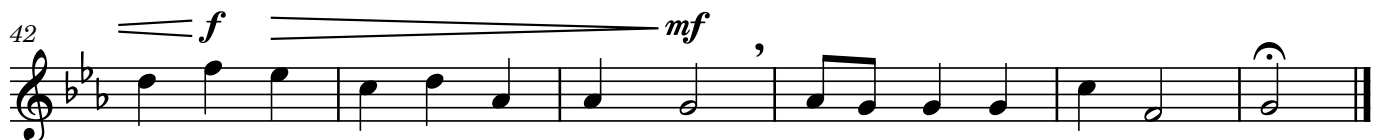
The year's in the wane; There is no - thing a - dor - ning; The



night has no eve, And the day has no mor - ning Cold win - ter gives war__



ning. The ri - vers run chill The red sun is sin - king; And I am



grown old And life is fast shrin - king; Here's e - now for sad thin - king!

Alto

Autumn

Thomas Hood (1799-1845)

Gijs Bikker

Andante $\text{♩} = 80$
mf



The au - tumn is__ old; The sere leaves are fly - ing; He hath ga - the - red up



gold And now he is dy_ing: Old age, be__ gin sigh - ing! The vin - tage is__



ripe; The har - vest is hea - ping; But some that have sowed Have no ri - ches for



rea - ping Poor wretch,__ fall a - wee - ping! The year's in__ the__



wane; There is no - thing a - dor - ning The night has__ no__ eve, And the



day__ has__ no mor - ning Cold win - ter gives war__ ning. The
mf



ri__ vers run__ chill The red sun is sin - king; And I am grown old And



life is fast shrin - king; Here's e - now for__ sad thin - king!

Tenor

Autumn

Thomas Hood (1799-1845)

Gijs Bikker

Andante $\text{♩} = 80$

mf



The au - tumn is old; The sear leaves are fly - ing; He hath



ga - the - red up gold And now he is dy - ing: Old age, be - gin sigh - ing!



The vin - tage is ripe; The har - vest is hea - ping; But some that



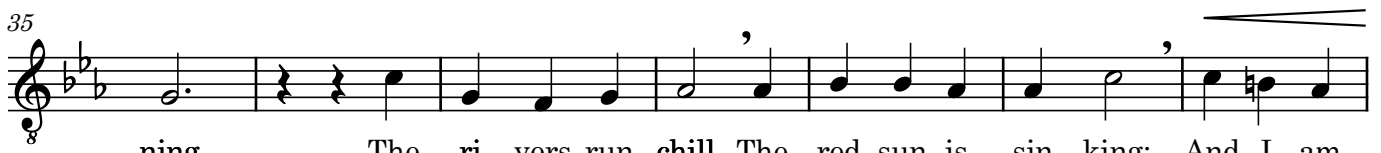
have sowed Have no ri - ches for_ rea - ping Poor wretch, fall a - wee - ping!



The year's in the wane; There is no - thing a - dor - ning; The



night has no eve, And the day has no mor - ning Cold win - ter gives war__



ning. The ri - vers run chill The red sun is sin - king; And I am



grown old And life is fast shrin - king; Here's e - now for sad thin - king!

Piano

Autumn

Thomas Hood (1799-1845)

Gijs Bikker

1. Autumn

Andante ♩ = 80

mf

5

11

mf

17

f

mf

22

mf

Measures 22-27: This system contains six measures of music. The key signature has two flats (B-flat and E-flat). The music is written for piano with a treble and bass clef. The melody in the treble clef features eighth and sixteenth notes, often beamed together. The bass clef provides a steady accompaniment with quarter and eighth notes. A dynamic marking of *mf* (mezzo-forte) is placed in the second measure.

28

Measures 28-32: This system contains five measures of music. The key signature remains two flats. The melodic line continues with similar rhythmic patterns, including some triplet-like groupings. The bass line maintains a consistent accompaniment. There are no dynamic markings in this system.

33

mf

Measures 33-38: This system contains six measures of music. The key signature is two flats. The melody in the treble clef shows some chromatic movement. The bass line continues with quarter and eighth notes. A dynamic marking of *mf* is present in the third measure.

39

f mf

Measures 39-44: This system contains six measures of music. The key signature is two flats. The melody in the treble clef features a series of chords and moving lines. The bass line continues with a steady accompaniment. Dynamic markings of *f* (forte) and *mf* (mezzo-forte) are present in the third and fifth measures, respectively.

45

Measures 45-47: This system contains three measures of music, ending with a double bar line. The key signature is two flats. The melody in the treble clef concludes with a final chord. The bass line provides a final accompaniment. There are no dynamic markings in this system.