

# Liedboek 2013 - 624 Christus, onze Heer, verrees

unknown / Gijs Bikker

♩ = 92 prelude

Trumpet in B♭ 1

Trumpet in B♭ 2

Horn in F

Trombone

Tuba in C

5 verse

Trumpet in B♭ 1

Trumpet in B♭ 2

Horn in F

Trombone

Tuba in C

10

Trumpet in B♭ 1

Trumpet in B♭ 2

Horn in F

Trombone

Tuba in C

This musical system covers measures 10 through 13. It features five staves: Trumpet in B♭ 1, Trumpet in B♭ 2, Horn in F, Trombone, and Tuba in C. The key signature is one sharp (F#) and the time signature is 4/4. The music is characterized by long, sweeping melodic lines with many ties across measures. The Trumpet 1 part has the most active melody, while the Trombone and Tuba parts provide a steady harmonic foundation with fewer notes.

14

Trumpet in B♭ 1

Trumpet in B♭ 2

Horn in F

Trombone

Tuba in C

This musical system covers measures 14 through 17. It features the same five staves as the previous system. The key signature remains one sharp (F#) and the time signature is 4/4. The melodic lines continue across measures, with some more rhythmic activity in measures 15 and 16. The overall texture remains consistent, with the Trumpet 1 part leading the melodic development and the lower brass instruments providing support.

19

Trumpet in B♭ 1

Trumpet in B♭ 2

Horn in F

Trombone

Tuba in C

postlude

24

rit.....

Trumpet in B♭ 1

Trumpet in B♭ 2

Horn in F

Trombone

Tuba in C

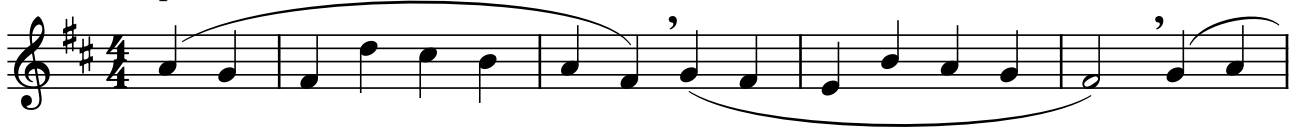
Trumpet (Bb) 1

Liedboek 2013 - 624 Christus, onze Heer, verrees

unknown / Gijs Bikker

♩ = 92

prelude



5

verse

*mf*



10



15



20



postlude

[24]

rit.....



Trumpet (Bb) 2

Liedboek 2013 - 624 Christus, onze Heer, verrees

unknown / Gijs Bikker

♩ = 92







Trombone

# Liedboek 2013 - 624 Christus, onze Heer, verrees

unknown / Gijs Bikker

♩ = 92

5

10

15

21

25

rit.....



Bass Tuba (Bb)

Liedboek 2013 - 624 Christus, onze Heer, verrees

unknown / Gijs Bikker

♩ = 92



Tuba

Liedboek 2013 - 624 Christus, onze Heer, verrees

unknown / Gijs Bikker

♩ = 92

